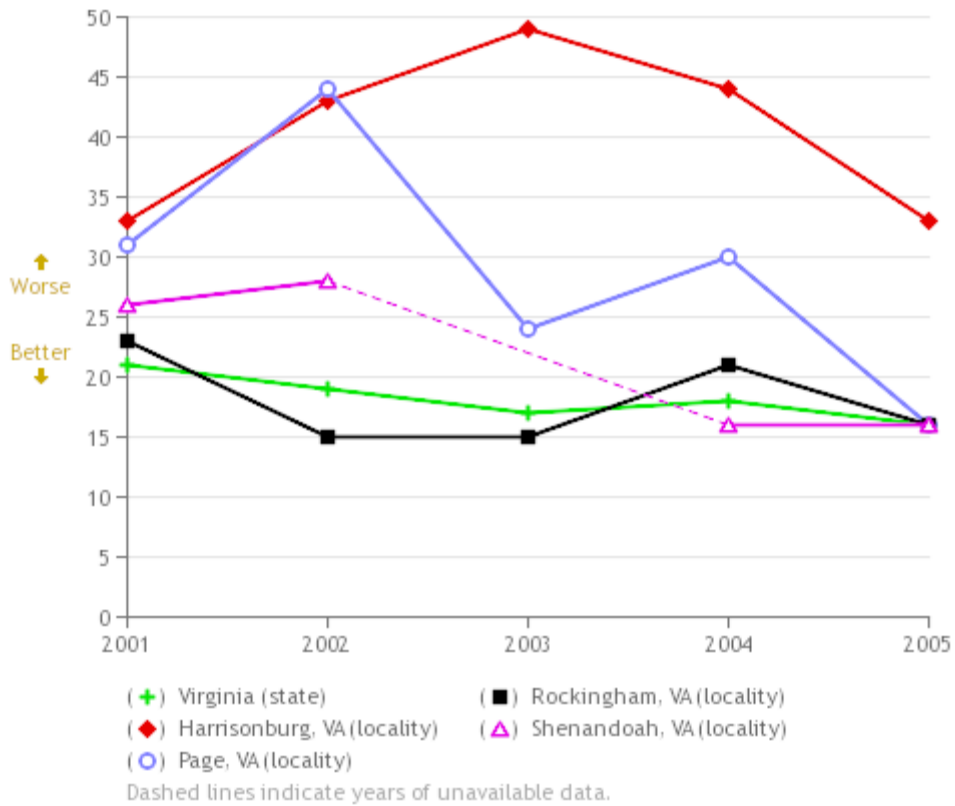


Births to Teen Girls (number of births per 1,000 girls), 2001-2005



Births to Teen Girls (number of births per 1,000 girls)					
	2001	2002	2003	2004	2005
Virginia (state)	21	19	17	18	16
Harrisonburg, VA (locality)	33	43	49	44	33
Page, VA (locality)	31	44	24	30	16
Rockingham, VA (locality)	23	15	15	21	16
Shenandoah, VA (locality)	26	28	N/A	16	16

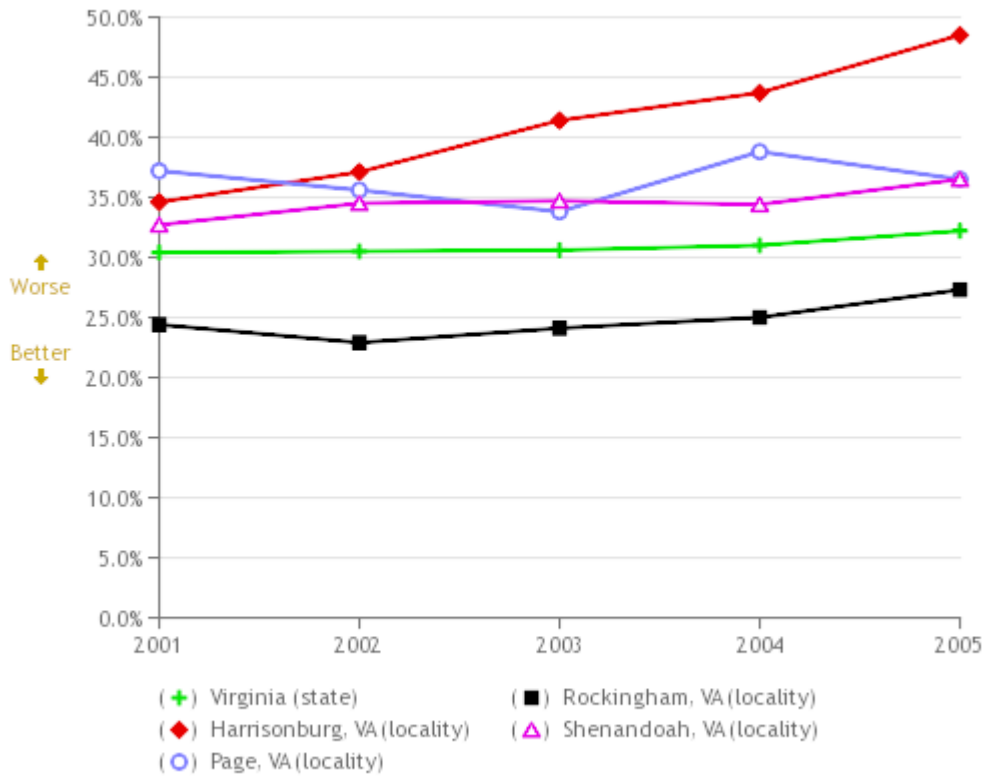
Definitions, Data Sources, and Notes

Births to Teen Girls (number of births per 1,000 girls)

Definitions: Total number of live births to females ages 15-17 per 1,000 females ages 15-17.

Data Source: Virginia Department of Health, Virginia Division of Health Statistics

Non-Marital Births, 2001-2005



Non-Marital Births					
	2001	2002	2003	2004	2005
Virginia (state)	30.4%	30.5%	30.6%	31.0%	32.2%
Harrisonburg, VA (locality)	34.6%	37.1%	41.4%	43.7%	48.5%
Page, VA (locality)	37.2%	35.6%	33.8%	38.8%	36.5%
Rockingham, VA (locality)	24.4%	22.9%	24.1%	25.0%	27.3%
Shenandoah, VA (locality)	32.7%	34.5%	34.7%	34.4%	36.5%

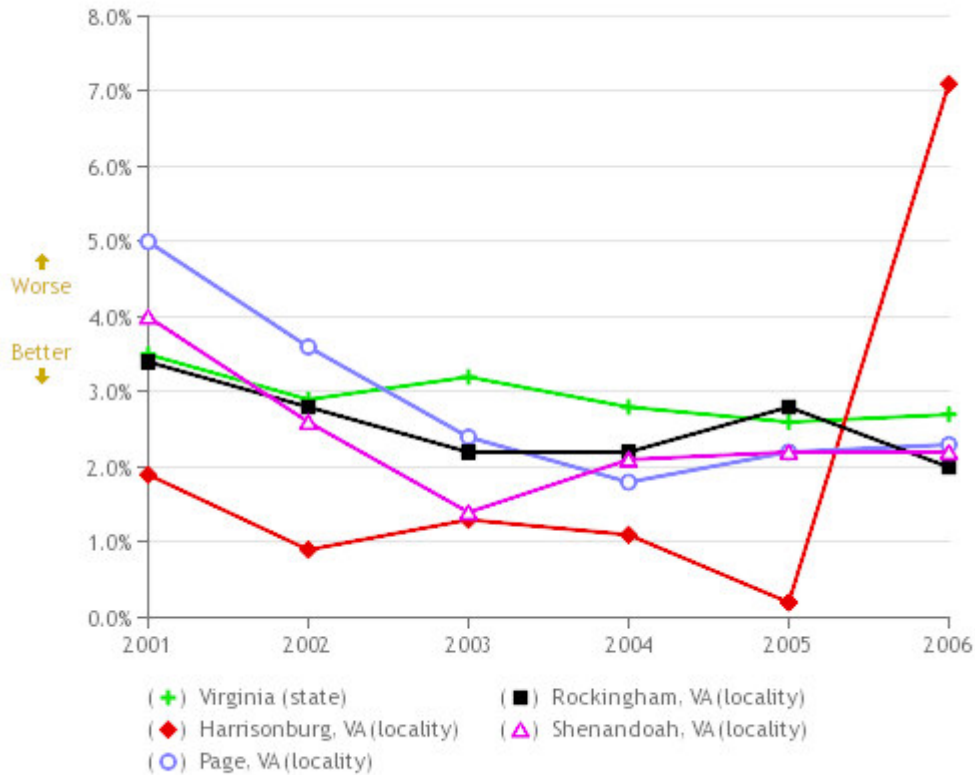
Definitions, Data Sources, and Notes

Non-Marital Births

Definitions: Births by women who were not married to the child's father at the time of the event and had not been married to him at any time in the preceding ten months.

Data Source: Virginia Department of Health

Dropouts, 9th-12th Grade (see note below), 2001-2006



Dropouts, 9th-12th Grade (see note below)						
	2001	2002	2003	2004	2005	2006
Virginia (state)	3.5%	2.9%	3.2%	2.8%	2.6%	2.7%
Harrisonburg, VA (locality)	1.9%	0.9%	1.3%	1.1%	0.2%	7.1%
Page, VA (locality)	5.0%	3.6%	2.4%	1.8%	2.2%	2.3%
Rockingham, VA (locality)	3.4%	2.8%	2.2%	2.2%	2.8%	2.0%
Shenandoah, VA (locality)	4.0%	2.6%	1.4%	2.1%	2.2%	2.2%

Definitions, Data Sources, and Notes

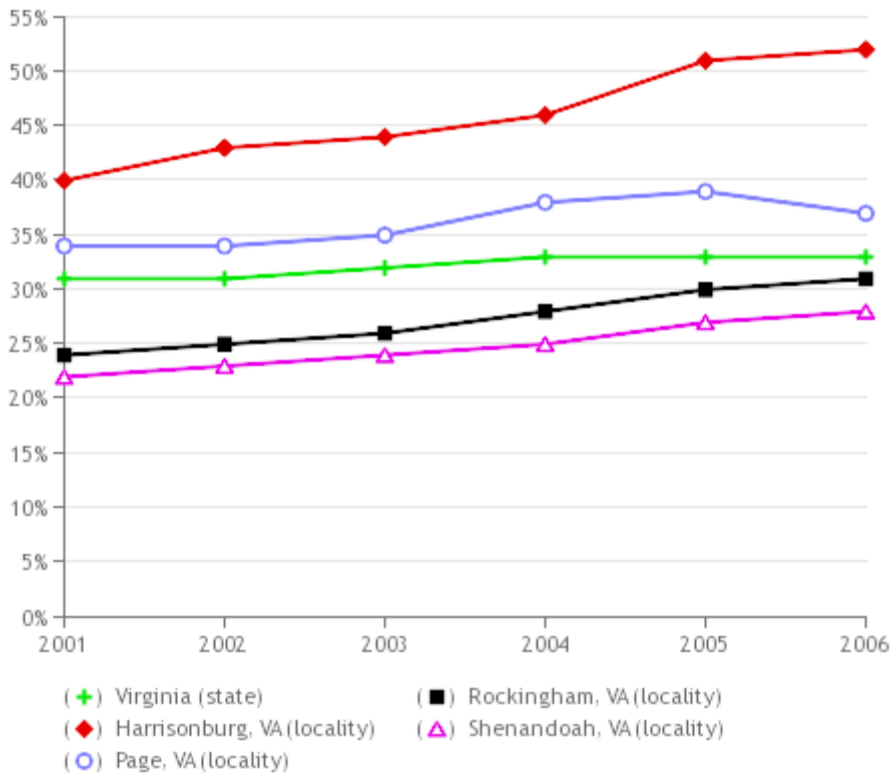
Dropouts, 9th-12th Grade (see note below)

Definitions: Percent of students in grades 9-12 who drop out of school. A dropout is an individual who: (1) Was enrolled in school at some time during the previous school year and was not enrolled on October 1 of the current school year, or (2) Was not enrolled on October 1 of the previous school year although expected to be in membership; and (3) Has not graduated from high school or completed a state- or district-approved educational program; and (4) Does not meet any of the following exclusionary conditions: (i) Transfer to another public school district, private school, or state- or district-approved education program; (ii) Temporary school-recognized absence due to suspension or illness; (iii) Death .

Data Source: Virginia Department of Education

Note: * Please use these data with caution. This is an approximate measure. More precise, individual student level will not be available until 2008. Colonial Beach is combined with Westmoreland and West Point is combined with King William. Data for the school year 2004-2005 are shown as 2005 data. The same rule applies for other years.

Students Approved for Free or Reduced Price School Lunch, 2001-2006



Students Approved for Free or Reduced Price School Lunch						
	2001	2002	2003	2004	2005	2006
Virginia (state)	31%	31%	32%	33%	33%	33%
Harrisonburg, VA (locality)	40%	43%	44%	46%	51%	52%
Page, VA (locality)	34%	34%	35%	38%	39%	37%
Rockingham, VA (locality)	24%	25%	26%	28%	30%	31%
Shenandoah, VA (locality)	22%	23%	24%	25%	27%	28%

Definitions, Data Sources, and Notes

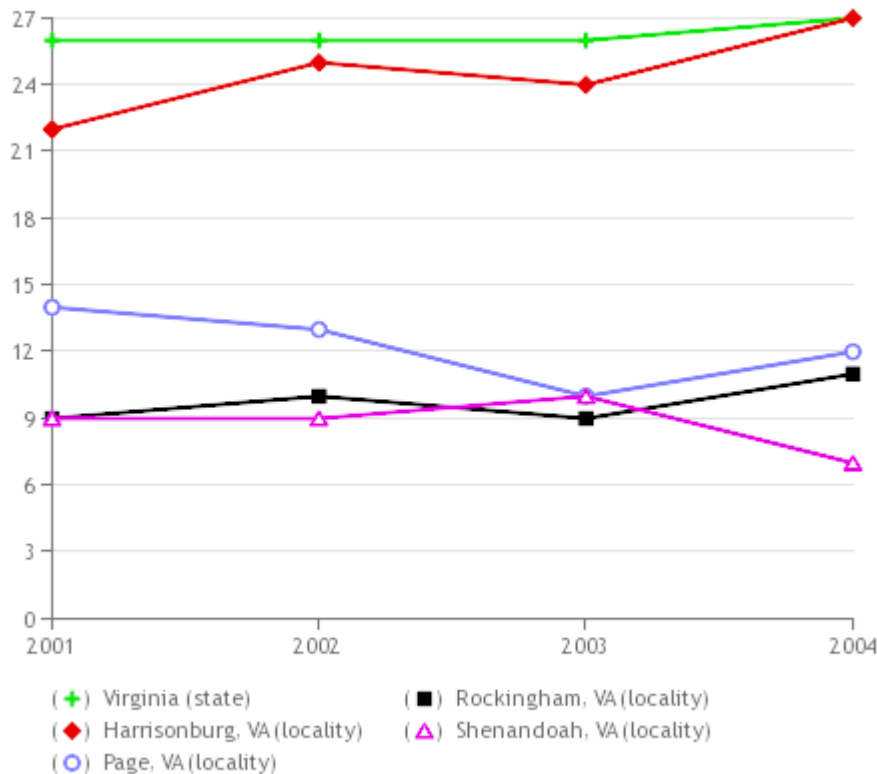
Students Approved for Free or Reduced Price School Lunch

Definitions: The percent of Virginia public school students, K-12, who were approved for free or reduced-price school lunches.

Data Source: Virginia Department of Education

Note: Some Virginia schools do not participate in the program and thus, do not report any data. One set of numbers was reported for the following localities: Bedford City and Bedford County; Fairfax City and Fairfax County; Williamsburg and James City County; Emporia and Greenville. Numbers were combined for West Point and King William County; Colonial Beach and Westmoreland. Data for the school year 2004-2005 are shown as 2005 data. The same rule applies for other years.

Children Receiving TANF (number per 1,000 children), 2001-2004



Children Receiving TANF (number per 1,000 children)				
	2001	2002	2003	2004
Virginia (state)	26	26	26	27
Harrisonburg, VA (locality)	22	25	24	27
Page, VA (locality)	14	13	10	12
Rockingham, VA (locality)	9	10	9	11
Shenandoah, VA (locality)	9	9	10	7

Definitions, Data Sources, and Notes

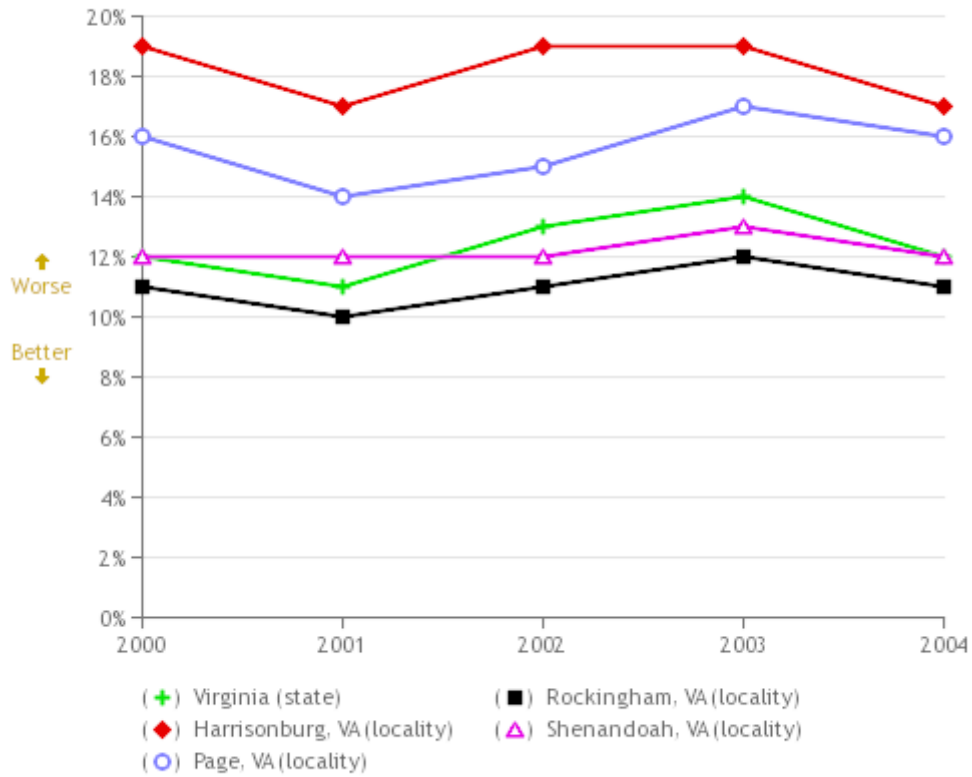
Children Receiving TANF (number per 1,000 children)

Definitions: Fiscal year monthly average of Virginians ages 0-18 who are receiving Temporary Assistance to Needy Families, a federally mandated block grant cash assistance program. Rates are per 1,000.

Data Source: Virginia Department of Social Services and US Census.

Note: Updated 3-10-05. Ages 0-18 denominator for 2000-2003. Previous years used 0-17. A child is eligible for TANF if age 18 and expected to graduate high school by age 19. 12/29/03 *1998-2002 localities with combined rates= Bedford City + Bedford County, Emporia+Greensville, Salem+Roanoke County, Fairfax County+Falls Church+Fairfax City, York+Poquoson. 2001 rate changes= Alleghany Co. 22/1000, was 36; Bedford Co. 16/1000, was 17; Greensville 47/1000, was 79. 2002 population ages 0-17 not available from Census, used estimates from National Center for Health Statistics. TANF 1999 population 0-17 updated with age/sex archive numbers now available on Census website. Previous calculations used race data to calculate population numbers for 1999. N/A=Not Available or Not Calculated b/c numerator is <10.

Poverty (ages 0-17), 2000-2004



Poverty (ages 0-17)					
	2000	2001	2002	2003	2004
Virginia (state)	12%	11%	13%	14%	12%
Harrisonburg, VA (locality)	19%	17%	19%	19%	17%
Page, VA (locality)	16%	14%	15%	17%	16%
Rockingham, VA (locality)	11%	10%	11%	12%	11%
Shenandoah, VA (locality)	12%	12%	12%	13%	12%

Definitions, Data Sources, and Notes

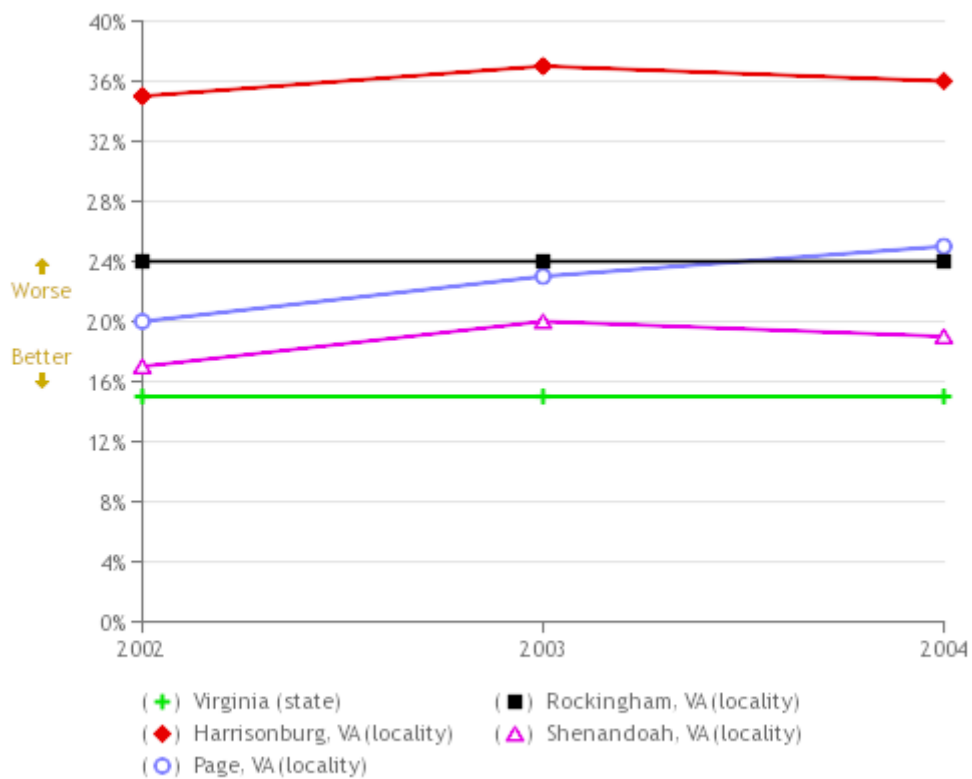
Poverty (ages 0-17)

Definitions: Children in Poverty (0-17)

Data Source: Small area income and poverty estimates

Note: US Census

Births to Mothers with less than 12th Grade Education, 2002-2004



Births to Mothers with less than 12th Grade Education				
	2002	2003	2004	
Virginia (state)	15%	15%	15%	
Harrisonburg, VA (locality)	35%	37%	36%	
Page, VA (locality)	20%	23%	25%	
Rockingham, VA (locality)	24%	24%	24%	
Shenandoah, VA (locality)	17%	20%	19%	

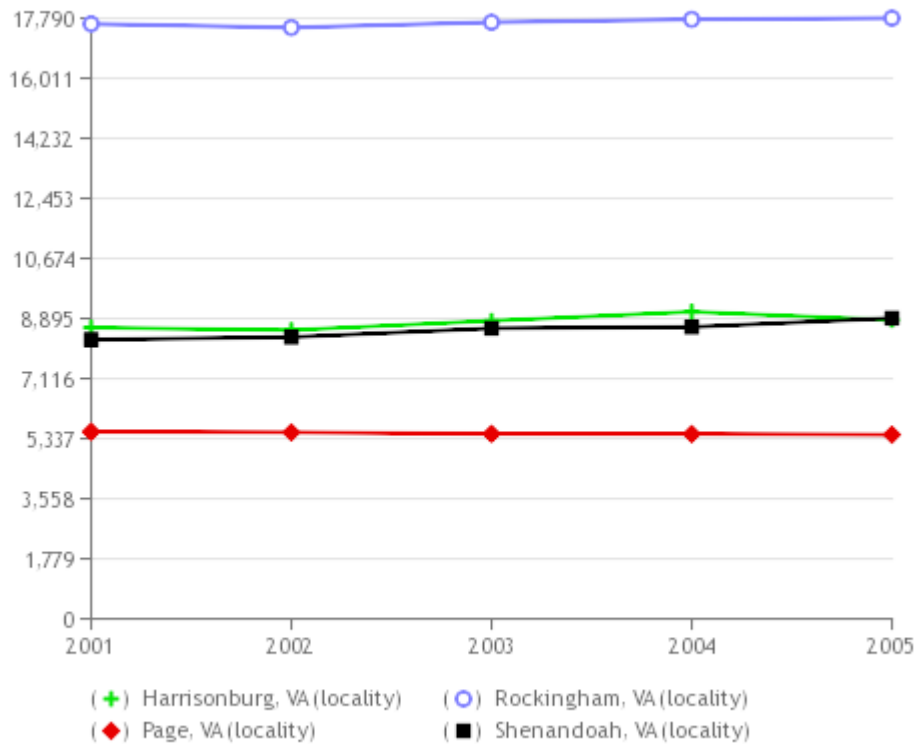
Definitions, Data Sources, and Notes

Births to Mothers with less than 12th Grade Education

Definitions: These data show the percentage of babies born in to mothers with less than 12 years of education.

Data Source: Virginia Department of Health

Population, Ages 0-18, 2001-2005



Population, Ages 0-18					
	2001	2002	2003	2004	2005
Harrisonburg, VA (locality)	8,622	8,549	8,825	9,092	8,847
Page, VA (locality)	5,540	5,521	5,479	5,474	5,451
Rockingham, VA (locality)	17,618	17,510	17,667	17,753	17,789
Shenandoah, VA (locality)	8,267	8,342	8,603	8,642	8,903

Definitions, Data Sources, and Notes

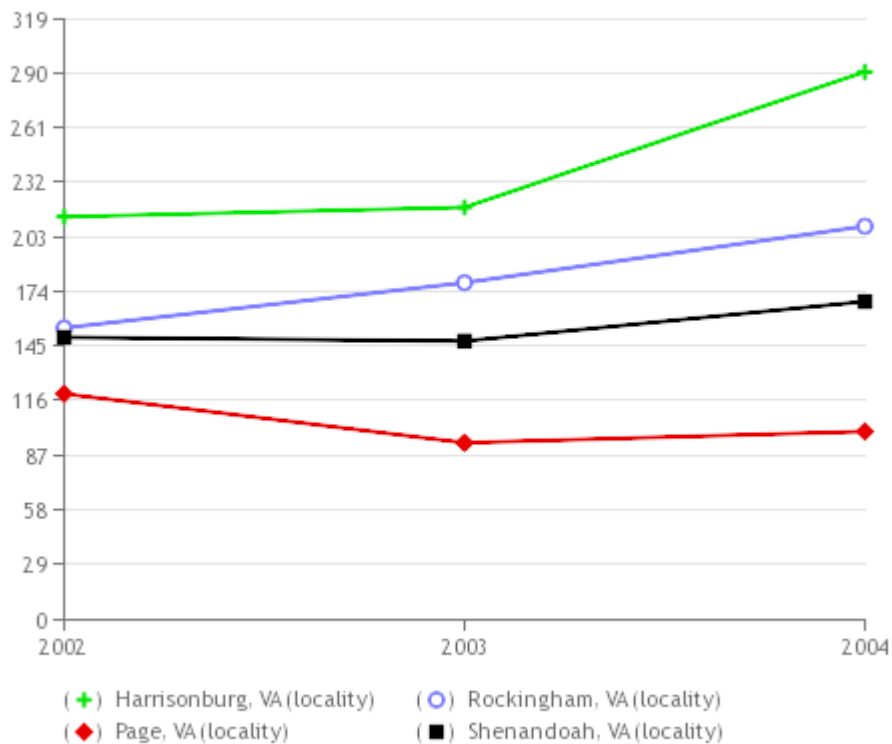
Population, Ages 0-18

Definitions: Population ages 0-18

Data Source: Virginia Division of Health Statistics

Note: Original data were provided by age groupings. In order to estimate a population 0-18 the category 18-19 was divided by 2 and added to population 0-17.

Number of Children Receiving Child Care Subsidies, 2002-2004



Number of Children Receiving Child Care Subsidies			
	2002	2003	2004
Harrisonburg, VA (locality)	214	219	291
Page, VA (locality)	120	94	100
Rockingham, VA (locality)	155	179	209
Shenandoah, VA (locality)	150	148	169

Definitions, Data Sources, and Notes

Number of Children Receiving Child Care Subsidies

Definitions: Number of children ages 0-12 receiving a child care subsidy.

Data Source: Virginia Department of Social Services